

Building Community-based Solutions for a Resilient Future



May 2, 2023 - Virginia Funders Network
Christine Gyovai - Dialogue + Design Associates



DIALOGUE
+ DESIGN
ASSOCIATES

About Us: Dialogue + Design's Services

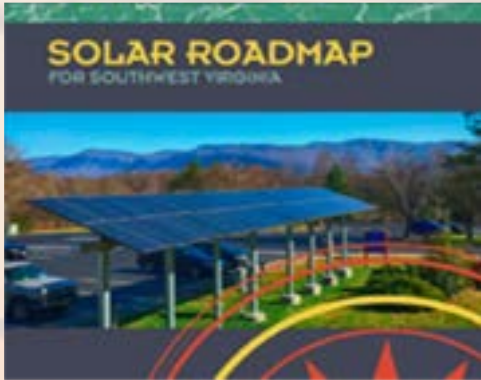


Dialogue + Design Associates is a planning, facilitation and design firm dedicated to helping local leaders and community members create the future they want to see. We work with individuals, organizations, and agencies to develop consensus, collaborative problem-solving, and community-building through our facilitation, strategic planning, and collaboration services, including:

- Community visioning and goal implementation strategies
- Meeting design, facilitation, and creating reports
- Grant-writing and resource identification
- Consensus-building and collaborative problem-solving processes
- Qualitative and quantitative research
- Charrettes for organizations, agencies, and communities
- Conducting issue assessments and stakeholder interviews
- Project evaluation



The collective is more effective





Email

Sign up

EPISODE 48

BUILDING RESILIENT NETWORKS
AND SUSTAINING LONG-TERM
COLLABORATIVES
WITH CHRISTINE GYOVAI



Episode 48:

Building Resilient Networks and Sustaining Long-Term Collaboratives with Christine Gyovai



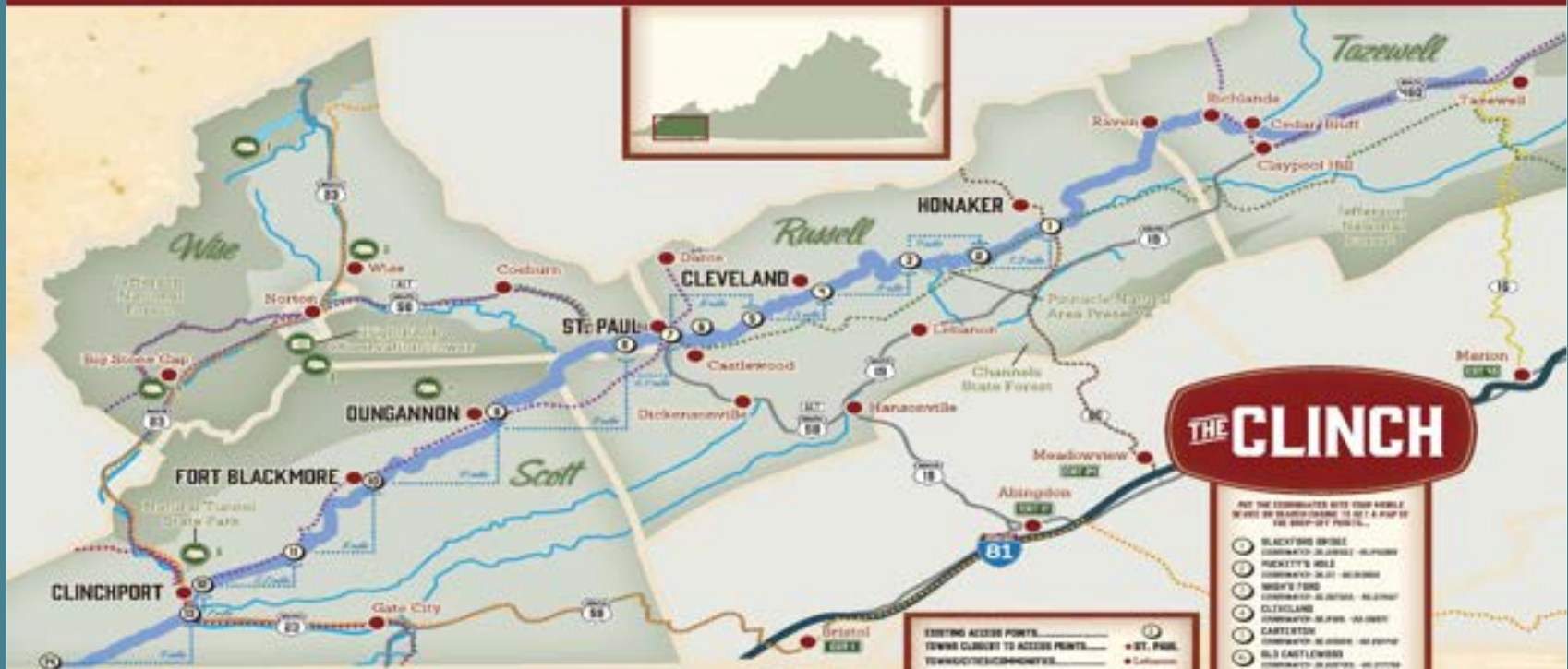
Listen to the podcast on your favorite platform:

[Apple](#) [Google Play](#) [Stitcher](#) [Spotify](#) [Amazon Music](#)

← Previous Episode

Next Episode →

PADDLE THE CLINCH



THE CLINCH

PUT THE COORDINATES INTO YOUR MOBILE DEVICE OR GPS DEVICE TO GET A MAP OF THE GREAT-OUTDOORS.

- 1 BLACKBIRD BRIDGE
- 2 HICKETY'S HOLE
- 3 NIGHT'S FORD
- 4 CLEVELAND
- 5 CARTERTON
- 6 OLD CASTLEWOOD
- 7 ST. PAUL
- 8 NIGHT'S FORD
- 9 SONGWINDS
- 10 FOOT SLACKSHOE
- 11 MILL STATION
- 12 CLINCHWOOD
- 13 SPICERS FERRY
- 14 STAFF LINE

EXISTING ACCESS POINTS
TOWNS CLOSEST TO ACCESS POINTS
TOWNS/CITIES/COUNTIES
DISTANCE BETWEEN ACCESS POINTS
COUNTY NAMES
CAMPGROUNDS
NATIONAL FOREST

IMPROVED ROAD FROM BERTHME TRAIL
ORAL BERTHME TRAIL
DANIEL BISHOP HALL'S BERTHME TRAIL
HEART OF APPALACHIA BIKE TRAIL
BACK OF THE DRAGON TRAIL
MUTE 70 BIKE TRAIL



ST. PAUL



Lebanon



Park



Campground



National Forest

ACCESS POINT FLOAT TIMES*

Blackbird Bridge to Putnam Hole: 15.7 hours, 73 mi
Putnam Hole to Madix Ford: 3.5 hours, 19 mi
Madix Ford to Cleveland: 4.6 hours, 24 mi
Cleveland to Carterton: 1.7 hours, 7.3 mi
Carterton to St. Paul: 4.4 hours, 24 mi
St. Paul to Norton's Ford: 3.8 hours, 20 mi

Norton's Ford to Dunganon: 5.6 hours, 32 mi
Dunganon to Ft. Blackmore: 5.3 hours, 30 mi
Ft. Blackmore to Old Castlewood: 4.6 hours, 26 mi
Old Castlewood to Carterton: 2.5 hours, 12 mi
Carterton to Spicers Ferry: 1.2 hours, 7 mi
Spicers Ferry to River Line: 4.5 hours, 25 mi

CAMPGROUNDS

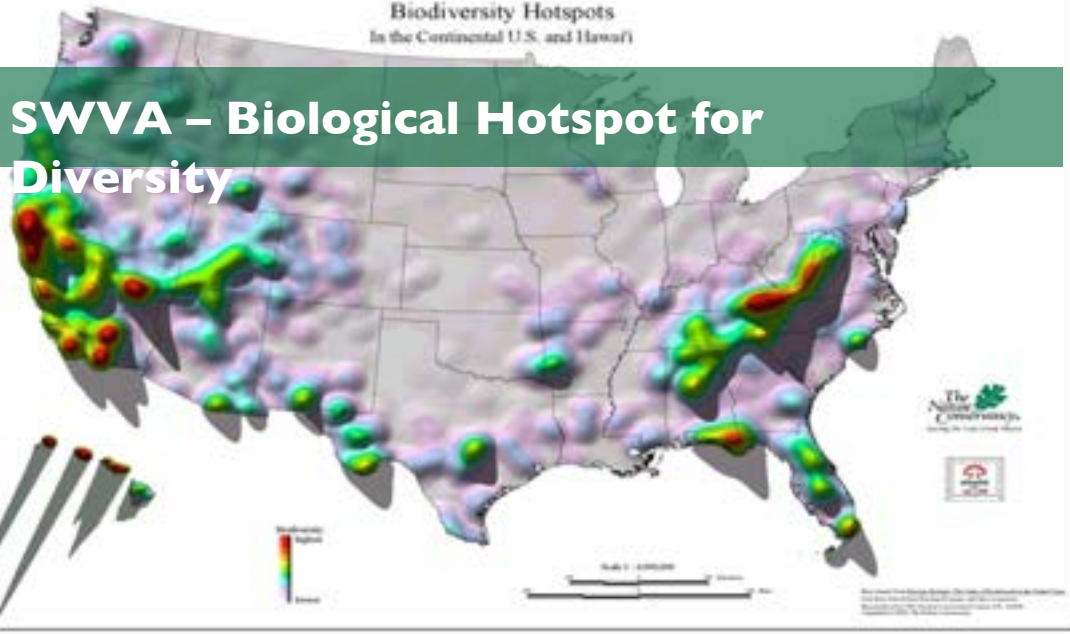
1. Case Park Campground
2. Carys Hill
3. High Knob Recreation Area
4. Bark Camp Recreation Area
5. Southwest Virginia Museum Historical State Park
6. Natural World State Park



*Float times listed are estimates and change with water flow rates on a daily basis. Always check local conditions prior to departure. Inappropriate stream discharge data for Clinch monitoring station #03120000 (Black River @ Cleveland) can be found using the code.

Biodiversity Hotspots
In the Continental U.S. and Hawaii

SWVA – Biological Hotspot for Diversity



The Story

- Rural part of far Southwest Virginia – four coalfield counties
- Region historically dependent on coal which powered the lights and tax base
- The Clinch River is one of the most biodiverse rivers in North America – highly treasured regional asset
- Significant collaboration & investment in region
- Diverse stakeholders and interests
- Strong grassroots effort with enthusiasm for the CRVI vision:

“By 2020, the Clinch River Valley will be a global destination based on its unique biodiversity, natural beauty, cultural attractions, and outdoor opportunities. This collaboration will bring measurable economic, environmental, & social benefits to the region’s communities while protecting the Clinch’s globally rare species.”



TIMELINE



Evolution

- Multi-year planning effort to build local economies around a special asset - **listening first and ongoing**
- Began in September 2010 at a “Building local economies in SWVA” meeting at UVa-Wise
- Open quarterly meetings and active action groups
- Building on resources that can’t be outsourced
- A coordinated system of unique communities – supporting local community visions
- Part of integrated economic development strategy building on natural and cultural assets
- Many federal, state, regional and local active partners

CRVI Goals



1. Develop a Clinch River State Park.



1. Develop and integrate access points, trails, and campgrounds.



1. Enhance water quality in the Clinch River.



1. Develop and enhance environmental education opportunities for all community members in the Clinch River watershed.



1. Connect and expand downtown revitalization, marketing and entrepreneurial development opportunities in the Clinch River valley.

ORGANIZATION AND PARTNERSHIPS

How is it organized

- CRVI is an organized coalition with backbone organization support from the UVA Institute for Engagement and Negotiation & Dialogue + Design Associates
- Now as a non-profit organization and hiring an exec. director (2022)

Key partnerships

- Five Action Groups were formed around each of the five goals to achieve the CRVI vision
- Each Action Group has volunteers and a chair or co-chair who is part of the CRVI Steering Committee. Decisions are made by consensus by the voluntary S.C.





Clinch River Valley Initiative

VISION: By 2020, the Clinch River Valley will be a global destination based on its unique biodiversity, natural beauty, cultural attractions and outdoor opportunities. This collaboration will bring measurable economic, environmental and social benefits to the region's communities while protecting the Clinch's globally rare species.



Local Context	Inputs	Outputs	Outcomes & Indicators	Impacts
<p>Existing Assets Region-wide cooperation & non-traditional partnerships</p> <p>Diverse funding opportunities</p> <p>Love of place and growing appreciation of cultural heritage</p> <p>Growing support for economic diversification</p> <p>The Clinch River's world class biodiversity</p> <p>Increasing outdoor</p>	<p>CRVI Action Groups: Downtown Revitalization Access Points Water Quality Environmental Education State Park</p> <p>Community volunteers</p> <p>Local, state and federal agency support</p> <p>Administrative support from FSWVA and UTRR</p> <p>Funding from varied sources</p>	<p>through <i>Hometowns of the Clinch</i></p> <p>Tourism infrastructure developed (signs, access points, etc.)</p> <p>Illegal dumpsites removed</p> <p>Household hazardous waste removed</p> <p>SOS monitors actively working and overall strengthening of SOS</p>	<p>Downtown Revitalization: Improved towns as economic hubs for tourism, education, & business development measured by number of outdoor recreation and tourism businesses, occupancy rate, meals and lodging, tax revenues</p> <p>Access Points: Improved Clinch River access for recreation, business development and education measured by number of boat launches publicly available, number of businesses using the access point, and number of river patrons using public access points</p> <p>Water Quality: Improved water quality measured by reduction in illegal dump sites, waste tonnage removed by clean-ups, and number of SOS monitors actively monitoring</p>	<p>Enhanced appreciation or interconnectedness among towns and region</p> <p>Enhanced value for entrepreneurship</p> <p>Increased collaborations between towns on new business development</p> <p>Increased compatible recreation access to the Clinch</p> <p>Increased appreciation for sensitivity of Clinch</p>

Tracking Progress over time

SUCCESSES AND CHALLENGES

The CRVI model has been pointed to as a notable success; these six elements have significantly contributed to the success of the Clinch River Valley Initiative:

- Inclusive to all stakeholders
- Active action groups
- Building trust and legitimacy
- Facilitation and coordination
- Consensus based decision-making
- Track progress over time

Clinch River Valley Initiative 2016 Indicators of Progress



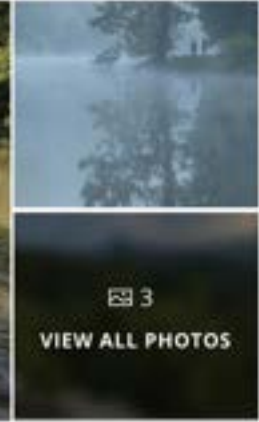
TAKEAWAYS

- The Clinch River Valley Initiative is in the process of becoming a non-profit organization
 - CRVI being “owned by no one entity, but by everyone.”
- New Clinch River State Park!
- Annual Clinch River Youth Summit
- Ecological Center now open in St. Paul
- Entrepreneurship focus and community capacity building - Hometowns on the Clinch program
- New river access points are open
- Trust and relationships have been built over time – fun & effective group
- Continued progress toward implementing goals and actions
- Demonstrated increased community involvement and resilience

Southwest Virginia river the star of new state park

by SARAH RANKIN, The Associated Press | Saturday, December 28th 2019

AA



3

[VIEW ALL PHOTOS](#)

<p>This July 26, 2019 photo provided by the Nature Conservancy shows a StreamSweepers employee pulls a canoe to shore on the Clinch River, Va. The Cumberland Forest Project protects 253,000 acres of Appalachian forest in Tennessee, Kentucky, and Virginia and is one of TNC's largest-ever conservation efforts in the eastern United States. StreamSweepers is a not for profit river maintenance and restoration service, staffed by young adults from Central Virginia. StreamSweepers assess the ecological health of rivers in the Piedmont portion of the state and remove small to large trash items from the river bed and banks. (Travis Dove/The Nature Conservancy via AP)/(p)

RICHMOND, Va. (AP) — As much of central Appalachia looks to reinvent itself amid the decline of coal, community leaders in southwest Virginia say they are seeing some early success by focusing on another natural resource: the Clinch River.

The Clinch, which flows for about 130 miles (209 kilometers) through four mountainous Virginia counties before crossing into Tennessee,



Vision: Southwest Virginia is a solar leader in the Commonwealth and Central Appalachia, building on the region's proud history as an energy leader, working to realize the economic, environmental, and resiliency benefits of solar energy for all SWVA community members.

Mission: The Solar Workgroup of Southwest Virginia is developing a locally rooted solar industry as a regional economic and social catalyst, creating jobs and energy savings, as well as attracting renewable energy investments and new business opportunities to SWVA.

Solar Workgroup Goals

- 1 Identify and develop sites that are ideal for solar development, especially solar “ambassador” projects.
- 2 Grow workforce development and entrepreneurship opportunities to advance solar projects and maximize local benefits.
- 3 Expand education and outreach in communities and with local leaders around solar benefits and opportunities.
- 4 Promote policy changes that will help grow the solar industry in Southwest Virginia.

Pursuing a locally rooted solar industry since 2016...



Workgroup Co-Conveners and Planning Team Members



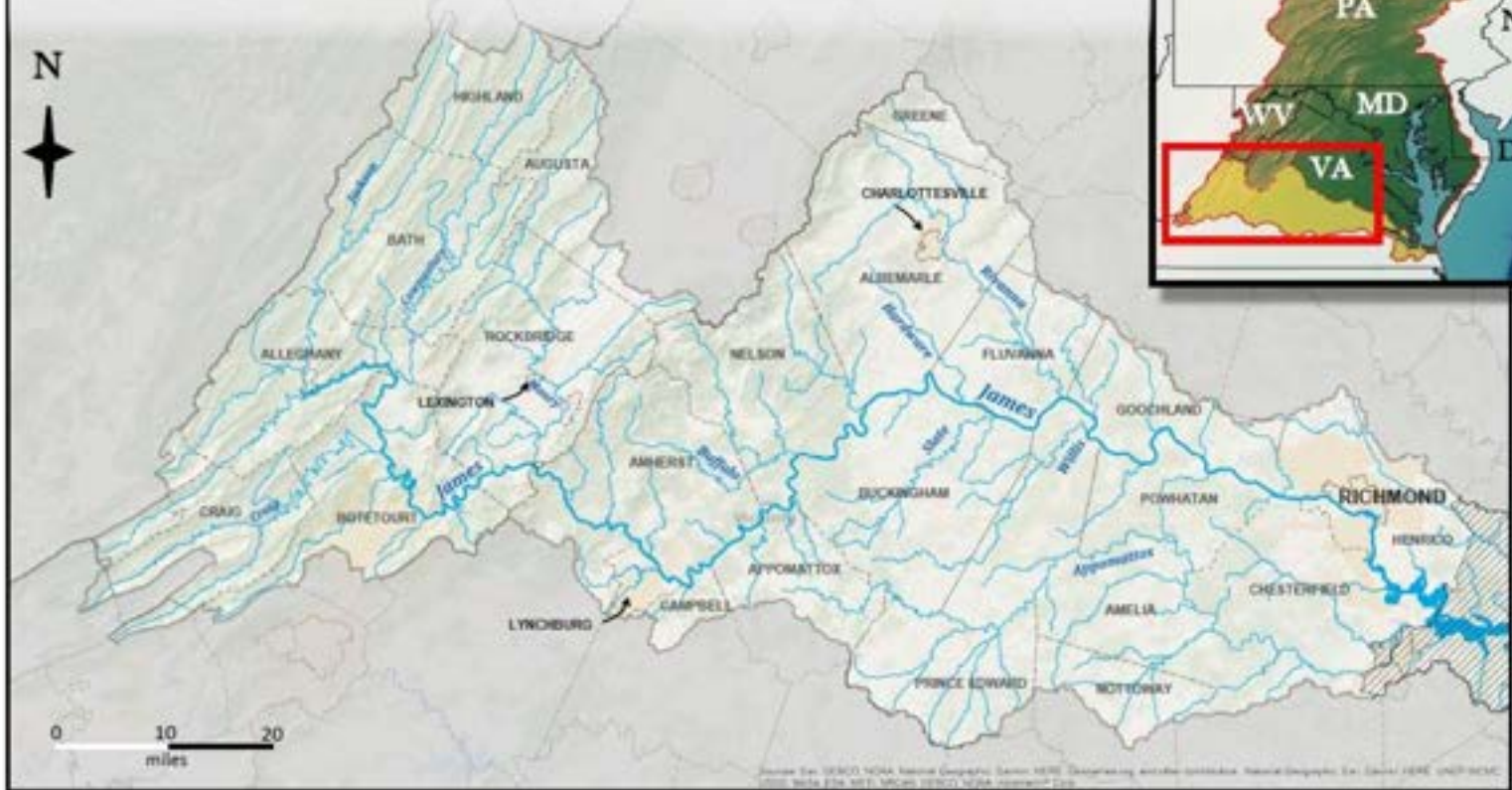
www.swvasolar.org

OUR VISION

Growing partnerships to create healthy streamside ecosystems for clean water in the James River today and tomorrow.



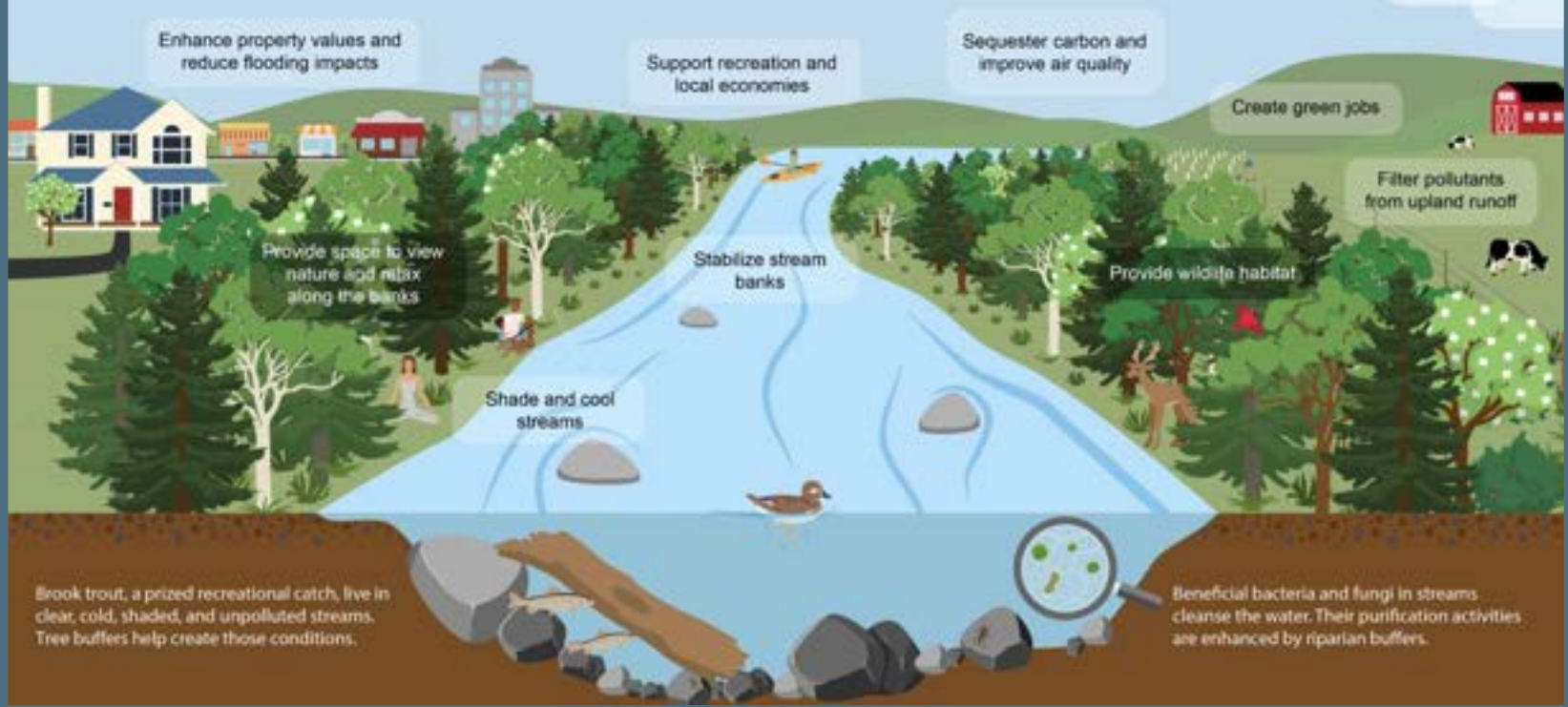
UPPER AND MIDDLE JAMES RIVER WATERSHED



Our Geography



Riparian buffers, or corridors of vegetation along creeks and rivers, provide a variety of benefits to water quality and our communities.



Our Focus

Our Mission + Values

MISSION

The Upper and Middle James Riparian Consortium is to support a network of partners to raise awareness, build workforce capacity, and increase implementation of riparian forest buffers across the Upper and Middle James watersheds through collaboration.

VALUES



Collaboration

We can go further together and seek opportunities to support, collaborate with, and learn from diverse partners both within and outside the James River watershed.



Holistic

We integrate practices such as livestock exclusion fencing, streambank stabilization, grass and forest buffers, and conservation easements that respond to landowner, landscape, and habitat needs.



Stewardship

We care for our existing riparian buffers and believe that stewardship is vital to sustained improvements in water quality and successful buffers.



Initiative

We are proactive and take initiative to create solutions that respond to the needs of Consortium partners and our streamside ecosystems for long-term health of the James River and our communities.



A Watershed of Partners

Planning Team



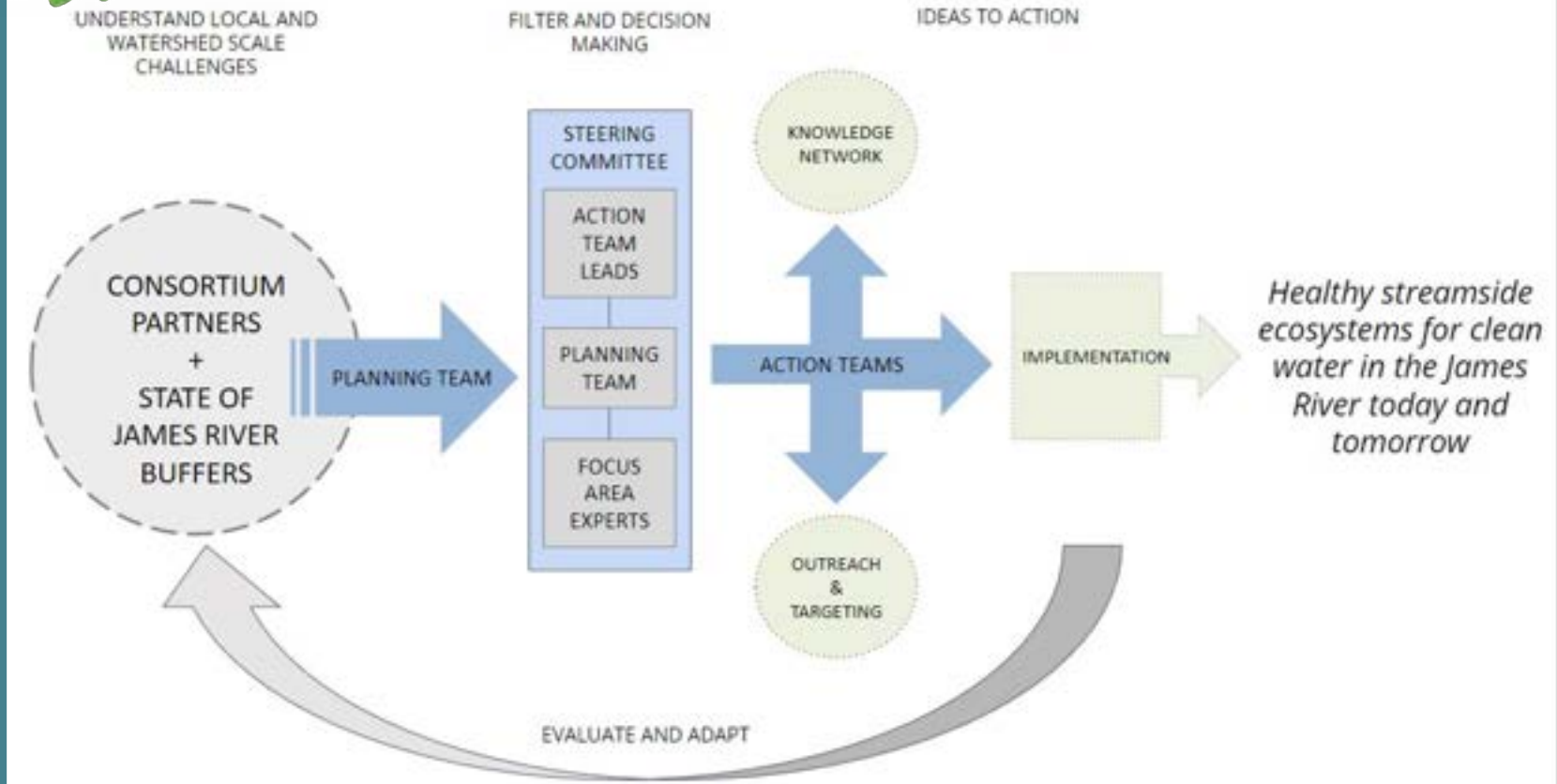
Steering Committee

300+ Members

Blue Ridge PRISM, Planning District Commissions, Capital Region Land Conservancy, Soil and Water Conservation Districts, EPA, Localities, US Fish and Wildlife Service, Center for Watershed Protection, Chesapeake Conservancy, Blue Ridge Land Conservancy, Boxerwood Nature Center, Central Virginia Land Conservancy, Virginia Outdoors Foundation, Conservation Services, Inc., Wetlands Watch, Chesapeake Bay Landscape Professionals, Virginia Cooperative Extension, Piedmont Environmental Council, Twinleaf Native Plant Nursery



Our Structure



CONTACT



DIALOGUE
+ DESIGN
ASSOCIATES

Christine Gyovai

christine@dialogueanddesign.com

www.dialogueanddesign.com

Link on site for the D+D newsletter

The Yes! We Rise podcast

Link for the newsletter, listen and learn more at:

www.yeswerise.org

Sign up on our website and download our free guide *3 Simple Strategies for a more Sustainable Life*. Feel free to subscribe, leave a rating and a review wherever you listen to podcasts.



www.yeswerise.org